

Valuers, Land & Estate Agents

6 Cornfield Road
Eastbourne
East Sussex BN21 4PJ

Tel: (01323) 722222

Fax: (01323) 722226

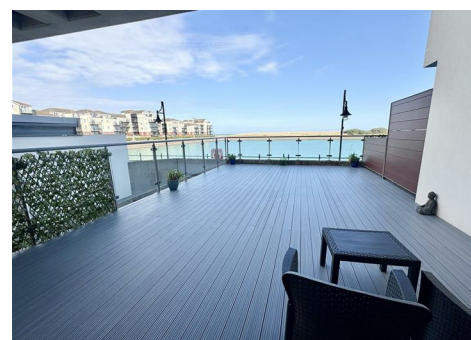
eastbourne@taylor-engley.co.uk

www.taylor-engley.co.uk

est. 1978



Taylor Engley



1 Bimini Court, 3, Midway Quay, Sovereign Harbour, Eastbourne, East Sussex, BN23 5DD
£1,100 Per Month

Available to rent this - ONE BEDROOMED GROUND FLOOR APARTMENT WITH A PRIVATE TERRACED ENJOYING PANORAMIC VIEWS OVER THE ENTRANCE OF EASTBOURNE'S SOVEREIGN HARBOUR. Available CHAIN FREE - this modern property boasts an open plan living room and kitchen, spacious entrance hall, double bedroom and bathroom in addition to the 31' private terrace. The property also has the benefit of an allocated car parking space. EPC = C



Sovereign Harbour boasts a selection of bars and restaurants with shopping facilities available at the nearby Sovereign Retail Park. Eastbourne town centre with its mainline railway station and comprehensive shopping facilities is situated approximately five miles distant.

*** COMMUNAL ENTRANCE HALL * PRIVATE ENTRANCE HALL * OPEN PLAN LIVING ROOM AND KITCHEN * SPACIOUS DOUBLE BEDROOM * BATHROOM * 31' TERRACE WITH PANORAMIC HARBOUR VIEWS * ALLOCATED OFF ROAD PARKING SPACE ***



The accommodation

Comprises:

Front door opening to:

Communal Entrance Hall

Private front door opening to:

Private Entrance Hall

Electric heater, video entry phone system, cupboard housing fuses and hot water tank.

Open Plan Living Room and Kitchen

16'8 x 16'3 (5.08m x 4.95m)

Kitchen Area

Having a selection of eye and base level units with work surface, stainless steel sink unit with mixer tap, integrated oven, hob and extractor fan, integrated dishwasher and fridge freezer, space for washing machine.

Living Room

Electric heater, television point, doors opening to terrace.

Bedroom

16'7" x 10'10" (5.05m x 3.30m)

Two double glazed windows with outlook to front, built-in wardrobe cupboards, electric wall heater.

Bathroom

White suite comprising bath with mixer tap and shower attachment, WC, washbasin, double glazed window to front, heated towel rail.

Terrace

31 x 17'11 (9.45m x 5.46m)

Decked terraced, partially undercover enjoying panoramic views over the entrance to the harbour.

Off Road Parking Space

One parking space situated in the car park below. Space No. 106.

COUNCIL TAX BAND:

Council Tax Band - 'D'

BROADBAND AND MOBILE PHONE CHECKER:

For broadband and mobile phone information please see the following website:
www.checker.ofcom.org.uk

FOR CLARIFICATION:

We wish to inform prospective purchasers that we have prepared these sales particulars as a general guide. We have not carried out a detailed survey nor tested the services, appliances & specific fittings. Room sizes cannot be relied upon for carpets and furnishings.

VIEWING ARRANGEMENTS:

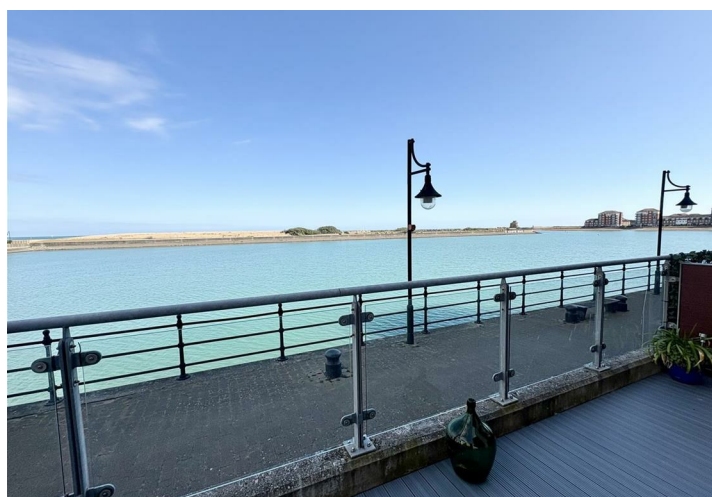
All appointments are to be made through TAYLOR ENGLELY.

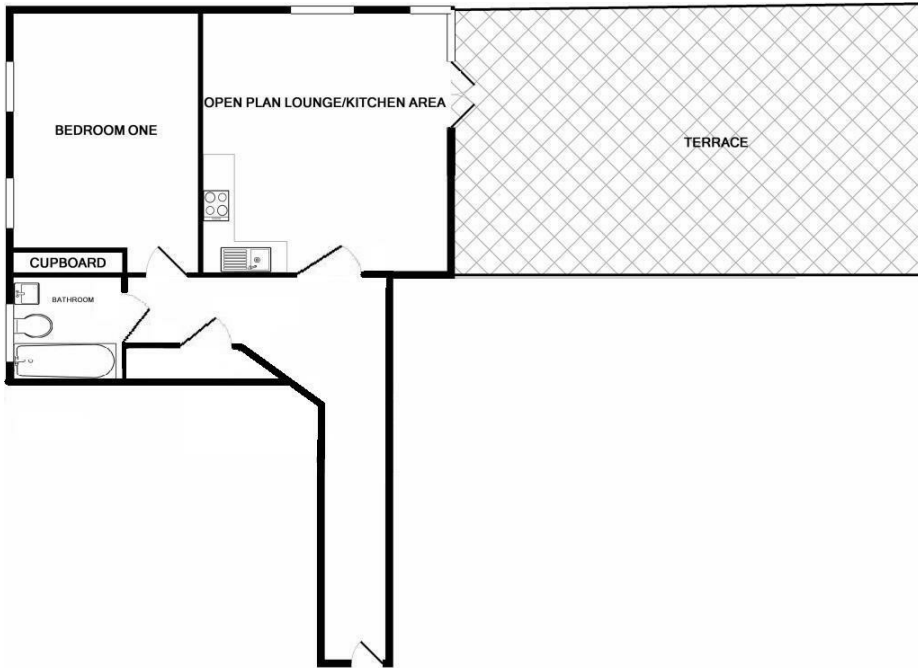
REFERENCES AND HOLDING PAYMENTS

* IMPORTANT * Please be advised that we will require a holding payment to the equivalent of one weeks rent prior to starting referencing. This will be held until the date of move in and will then be deducted from your final rent amount.

If you decide not to proceed with the tenancy, provide false or misleading information, fail a right to rent check or fail to take reasonable steps to enter into a tenancy agreement, then we will retain the holding payment to cover costs incurred.

If you require further clarification on the above, please do not hesitate to contact us on 01323 722222 or email lettings@taylor-engley.co.uk.





Energy Efficiency Rating		
	Current	Potential
<i>Very energy efficient - lower running costs</i>		
(92 plus) A		
(81-91) B		
(69-80) C	71	79
(55-68) D		
(39-54) E		
(21-38) F		
(1-20) G		
<i>Not energy efficient - higher running costs</i>		
England & Wales	EU Directive 2002/91/EC	
Environmental Impact (CO ₂) Rating		
	Current	Potential
<i>Very environmentally friendly - lower CO₂ emissions</i>		
(92 plus) A		
(81-91) B		
(69-80) C		
(55-68) D		
(39-54) E		
(21-38) F		
(1-20) G		
<i>Not environmentally friendly - higher CO₂ emissions</i>		
England & Wales	EU Directive 2002/91/EC	

We are open 8.45 a.m - 5.45 p.m weekdays 9.00 a.m - 5.30 p.m Saturdays

These particulars are issued on the strict understanding that all negotiations are conducted through Taylor Engley. They do not constitute whole or part of an offer or contract. They are believed to be correct but are not to be relied on as statements and representations of fact and their accuracy is not guaranteed.

Any intending purchaser must satisfy himself by inspection or otherwise as to their correctness.

Taylor Engley is a trading name of Taylor Engley Limited, registered office: Railview Lofts, 19c Commercial Road, Eastbourne, East Sussex, BN21 3XE, company number 5477238, registered in England and Wales.